

**PAOLO**  
**TRS25914**  
 TRACK HEAD

PROJECT



**DESCRIPTION**

Introducing the Paolo track head for the Kuzco Trilo track system. Illuminate the important features of a space using this adjustable, directional beam of light. Available in two sizes and finishes to fit the needs of your space.



TRS25914-BG  
Brushed Gold



TRS25914-BG-4K  
Brushed Gold



TRS25914-BK-4K  
Black



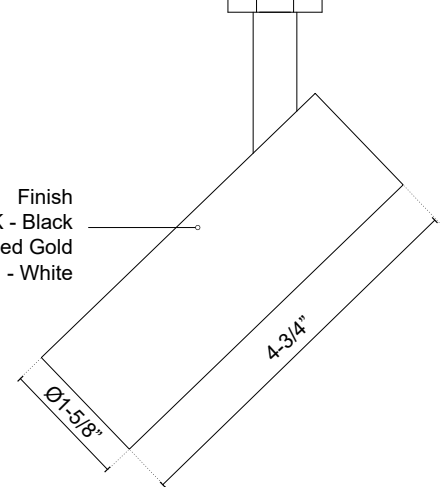
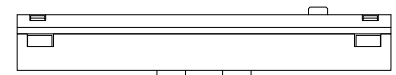
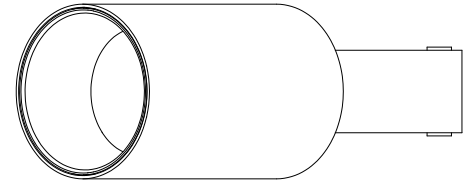
TRS25914-BK  
Black



TRS25914-WH  
White



TRS25914-WH-4K  
White



**SPECIFICATION DETAILS**

<b>Fixture Dimensions</b>	D1-5/8" x H4-3/4"
<b>Light Source</b>	Low Voltage LED
<b>Wattage</b>	8W
<b>Total Lumens</b>	680lm
<b>Delivered Lumens</b>	BK-550lm (@3000K); BK-575lm* (@4000K); BG-560lm* (@3000K); BG-585lm* (@4000K); WH-580lm* (@3000K); WH-605lm* (@4000K)
<b>Voltage</b>	48V, with DC Class 2 LED driver (see available canopy/driver options)
<b>Color Temperature</b>	3000K; 4000K;
<b>CRI (Ra)</b>	90CRI
<b>LED Rated Life</b>	50,000 hours
<b>Location</b>	Dry
<b>CEC Title 24 JA8</b>	Yes, JA8-2022
<b>Illumination Direction</b>	Directional
<b>Material</b>	Aluminum + Acrylic
<b>Paint Finish</b>	BK02; BG01; WH02
<b>Shade Details</b>	BK-Black Baffle; BG-Black Baffle; WH-White Baffle
<b>Diffuser Details</b>	Clear Acrylic Lens

\* For custom options, consult factory for details.

\* For warranty information, please visit [www.kuzcolighting.com/warranty](http://www.kuzcolighting.com/warranty)

**KUZCO**

CANADA: 19054 28TH AVENUE - SURREY, BC V3Z 6M3  
 USA: 3035 E. LONE MOUNTAIN ROAD - LAS VEGAS, NV 89081

[WWW.KUZCOLIGHTING.COM](http://WWW.KUZCOLIGHTING.COM)

© 2024 KUZCO LIGHTING. ALL RIGHTS RESERVED.

**COMMENT**

